

## 2024 RURAL MOBILE LIBRARY CALENDAR

| JANUARY |    |    |    |    |    |    |
|---------|----|----|----|----|----|----|
| M       | T  | W  | T  | F  | S  | S  |
| 1       | 2  | 3  | 4  | 5  | 6  | 7  |
| 8       | 9  | 10 | 11 | 12 | 13 | 14 |
| 15      | 16 | 17 | 18 | 19 | 20 | 21 |
| 22      | 23 | 24 | 25 | 26 | 27 | 28 |
| 29      | 30 | 31 |    |    |    |    |

| FEBRUARY |    |    |    |    |    |    |
|----------|----|----|----|----|----|----|
| M        | T  | W  | T  | F  | S  | S  |
|          |    |    | 1  | 2  | 3  | 4  |
| 5        | 6  | 7  | 8  | 9  | 10 | 11 |
| 12       | 13 | 14 | 15 | 16 | 17 | 18 |
| 19       | 20 | 21 | 22 | 23 | 24 | 25 |
| 26       | 27 | 28 | 29 |    |    |    |

| MARCH |    |    |    |    |    |    |
|-------|----|----|----|----|----|----|
| M     | T  | W  | T  | F  | S  | S  |
|       |    |    |    | 1  | 2  | 3  |
| 4     | 5  | 6  | 7  | 8  | 9  | 10 |
| 11    | 12 | 13 | 14 | 15 | 16 | 17 |
| 18    | 19 | 20 | 21 | 22 | 23 | 24 |
| 25    | 26 | 27 | 28 | 29 | 30 | 31 |

| APRIL |    |    |    |    |    |    |
|-------|----|----|----|----|----|----|
| M     | T  | W  | T  | F  | S  | S  |
| 1     | 2  | 3  | 4  | 5  | 6  | 7  |
| 8     | 9  | 10 | 11 | 12 | 13 | 14 |
| 15    | 16 | 17 | 18 | 19 | 20 | 21 |
| 22    | 23 | 24 | 25 | 26 | 27 | 28 |
| 29    | 30 |    |    |    |    |    |

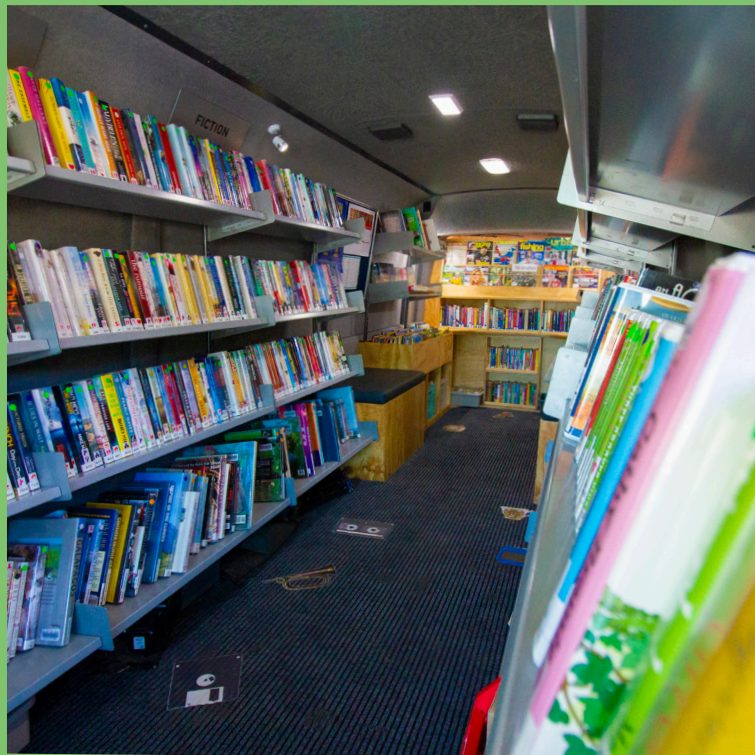
| MAY |    |    |    |    |    |    |
|-----|----|----|----|----|----|----|
| M   | T  | W  | T  | F  | S  | S  |
|     |    | 1  | 2  | 3  | 4  | 5  |
| 6   | 7  | 8  | 9  | 10 | 11 | 12 |
| 13  | 14 | 15 | 16 | 17 | 18 | 19 |
| 20  | 21 | 22 | 23 | 24 | 25 | 26 |
| 27  | 28 | 29 | 30 | 31 |    |    |

| JUNE |    |    |    |    |    |    |
|------|----|----|----|----|----|----|
| M    | T  | W  | T  | F  | S  | S  |
|      |    |    |    |    | 1  | 2  |
| 3    | 4  | 5  | 6  | 7  | 8  | 9  |
| 10   | 11 | 12 | 13 | 14 | 15 | 16 |
| 17   | 18 | 19 | 20 | 21 | 22 | 23 |
| 24   | 25 | 26 | 27 | 28 | 29 | 30 |

**KEY** **RURAL MOBILE LIBRARY DAYS**

The timetable is accurate at the time of printing

## MOBILE LIBRARY TE WAKA PUKAPUKA RURAL TIMETABLE JANUARY - JUNE 2024



To renew your items or for assistance please  
phone 06-759 6060 or go online to our  
website at [www.pukeariki.com](http://www.pukeariki.com)

# Puke Ariki



1 ARIKI STREET, NEW PLYMOUTH | 06-759 6060  
[www.pukeariki.com](http://www.pukeariki.com)

# MOBILE LIBRARY RURAL TIMETABLE

## TE WAKA PUKAPUKA

### JANUARY - JUNE 2024

The Mobile Library/Te Waka Pukapuka stops at a street near you every second week. It is well stocked with a selection of fiction, non-fiction, large print, audio books, DVDs, and magazines for all ages.

You are also able to request any library item by emailing [mobile@npdc.govt.nz](mailto:mobile@npdc.govt.nz) or by calling **(06) 759 6060**.

The item will be brought to the stop most convenient for you.

If you do not already have a Puke Ariki Library card, you may sign up for one on the bus.



#### Monday

|   | Feb 5,19          | Mar 4,18 | Apr 29 | May 13,27 | Jun 10,24 |
|---|-------------------|----------|--------|-----------|-----------|
| <b>Butterfly Preschool</b>              | 9.15am - 9.45am   |          |        |           |           |
| <b>Lollipops Preschool</b>              | 9.50am - 10.20am  |          |        |           |           |
| <b>Future Kids Preschool Bell Block</b> | 10.30am - 11am    |          |        |           |           |
| <b>Cubby House Preschool</b>            | 11.15am - 11.45am |          |        |           |           |
| <b>Omata School</b>                     | 12pm - 1pm        |          |        |           |           |
| <b>Green School</b>                     | 1.30pm - 2.30pm   |          |        |           |           |

#### Tuesday

|                         | Feb 20            | Mar 5,19 | Apr 2,30 | May 14,28 | June 11,25 |
|-------------------------|-------------------|----------|----------|-----------|------------|
| <b>Waitoriki School</b> | 9.30am - 10.15am  |          |          |           |            |
| <b>Norfolk School</b>   | 10.30am - 11.30am |          |          |           |            |
| <b>Ratapiko School</b>  | 11.45am - 12.15pm |          |          |           |            |
| <b>Kaimata School</b>   | 12.30pm - 2.30pm  |          |          |           |            |

#### Wednesday

|                                | Feb 7,21         | Mar 6,20 | Apr 3 | May 1,15,29 | Jun 12,26 |
|--------------------------------|------------------|----------|-------|-------------|-----------|
| <b>Lepperton School</b>        | 9:15am - 10.30am |          |       |             |           |
| <b>Ruru House Lepperton</b>    | 10:35am - 11am   |          |       |             |           |
| <b>Waitara East School</b>     | 11.30am - 1pm    |          |       |             |           |
| <b>Norfolk Lodge Rest Home</b> | 1pm - 1:15pm     |          |       |             |           |
| <b>Piccolo Preschool</b>       | 1:45pm - 2:15pm  |          |       |             |           |

#### Thursday

|                        | Feb 8,22      | Mar 7,21 | Apr 4 | May 2,16,30 | Jun 13,27 |
|------------------------|---------------|----------|-------|-------------|-----------|
| <b>Moturoa School</b>  | 9am - 11am    |          |       |             |           |
| <b>Huirangi School</b> | 11:30am - 1pm |          |       |             |           |

#### Friday

|                                  | Feb 9,23         | Mar 8,22 | Apr 5 | May 3,17,31 | Jun 14 |
|----------------------------------|------------------|----------|-------|-------------|--------|
| <b>Mimi School</b>               | 9:30am - 10:15am |          |       |             |        |
| <b>Uruti School</b>              | 11am - 11.30am   |          |       |             |        |
| <b>Tongaporutu</b>               | 12pm - 12:30pm   |          |       |             |        |
| <b>Ahititi School</b>            | 12:35pm - 1pm    |          |       |             |        |
| <b>Kidzone Bell Block School</b> | 2:15pm - 2.45pm  |          |       |             |        |