

# NEKENEKEHIA TUKUA

A WHAREHOKASMITH EXHIBITION  
For museums and art galleries in partnership with Puke Ariki

Puke Ariki

Te Kaunihera-ā-Rohe  
o Ngāmotu

WharehokaSmith



*'It's so important that our Māori art has a voice, has a presence within our community ...'*

WharehokaSmith

# NEKENEKEHIA TUKUA

## NEKENEKEHIA! MOVE! TUKUA! SEND IT OUT!


*Nekenekehia Tukua* is a trail-blazing exhibition from Taranaki-based kaihoahoa toi (artist designer) WharehokaSmith, created in partnership with Puke Ariki.

It reconnects toi Māori with daily life, presenting it as embedded in our everyday world, as it was originally.

*Nekenekehia Tukua* is:

- A wero – a challenge to expand our understanding of toi Māori
- A glimpse of what Aotearoa might look like if Te Tiriti were honoured
- Embodied toi Māori – a place for art making, where everyone can experience, participate, kōrero, contemplate.





*'This particular design ... could stand anywhere. So when you are in ... the modern world ... there is that moment of relief ... that place that you can go to, as opposed to having to say: 'I'll wait till the weekend and go back to my marae.'*

WharehokaSmith



## SPACE FOR KŌRERO

At a time when Te Tiriti is again being questioned, there's a pressing need for informed, respectful kōrero around its ongoing relevance.

*Nekenekehia Tukua* provides a welcoming space to hold wānanga with local communities, inviting local artists, thinkers, teachers, and students to share their thoughts and practices.

- What might Aotearoa look like if Māori art and design shaped our built environment?
- What stories lie beneath the concrete landscapes we live in today?
- How does our built environment affect our sense of self and belonging, and the conversations we feel able to have?

# AUDIENCES

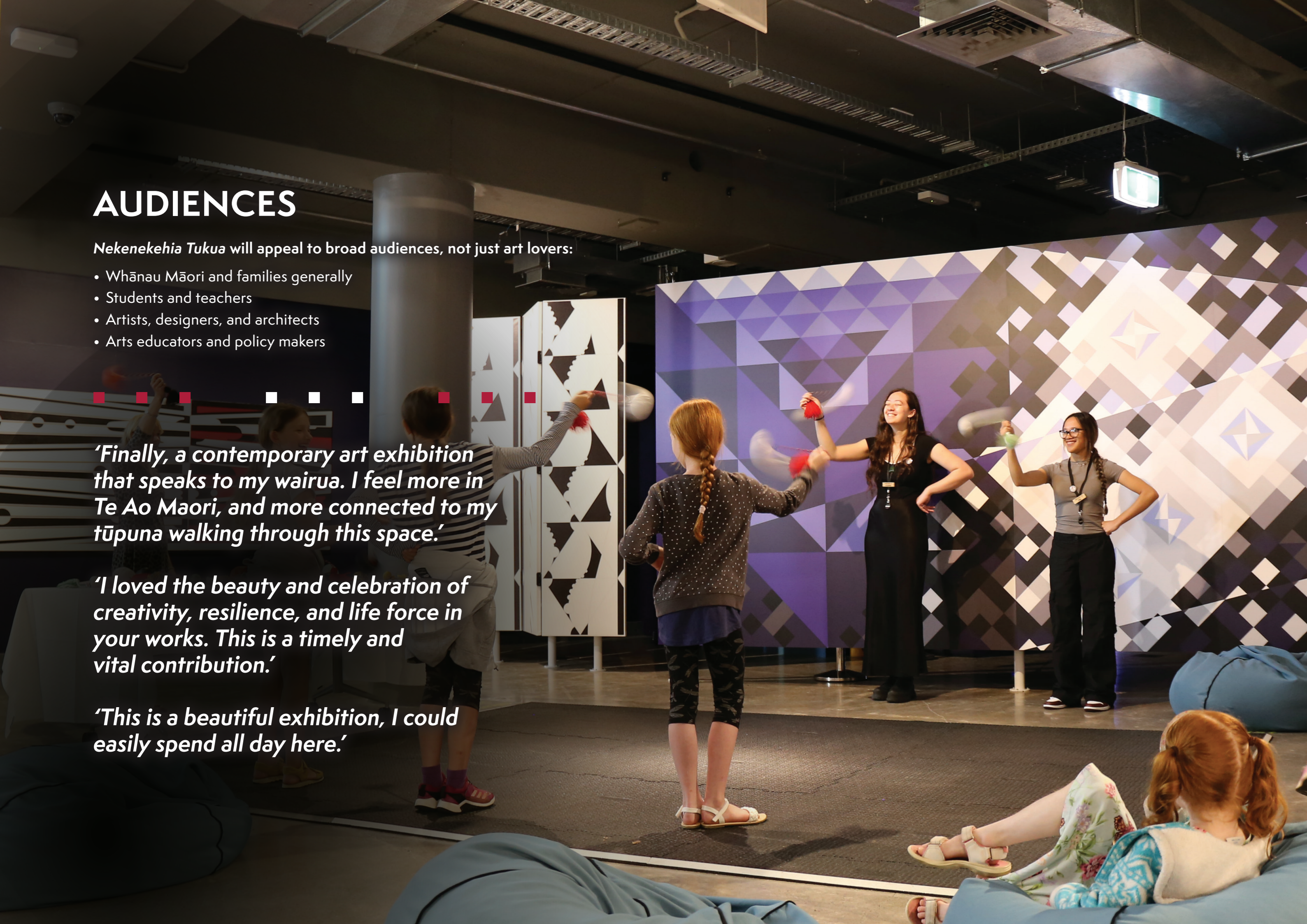
*Nekenekehia Tukua* will appeal to broad audiences, not just art lovers:

- Whānau Māori and families generally
- Students and teachers
- Artists, designers, and architects
- Arts educators and policy makers

*'Finally, a contemporary art exhibition that speaks to my wairua. I feel more in Te Ao Maori, and more connected to my tūpuna walking through this space.'*

*'I loved the beauty and celebration of creativity, resilience, and life force in your works. This is a timely and vital contribution.'*

*'This is a beautiful exhibition, I could easily spend all day here.'*



*'The Western world wants to separate the arts.  
In the Māori world, we bring it all together.'*



## WHAREHOKASMITH

WharehokaSmith (Taranaki Tūturu, Te Ātiawa, Ngā Ruahine, Ngāti Pākehā) is a visionary in toi Māori. His work is informed by the deep well of traditional Māori art practices, where he contributes through a contemporary lens.

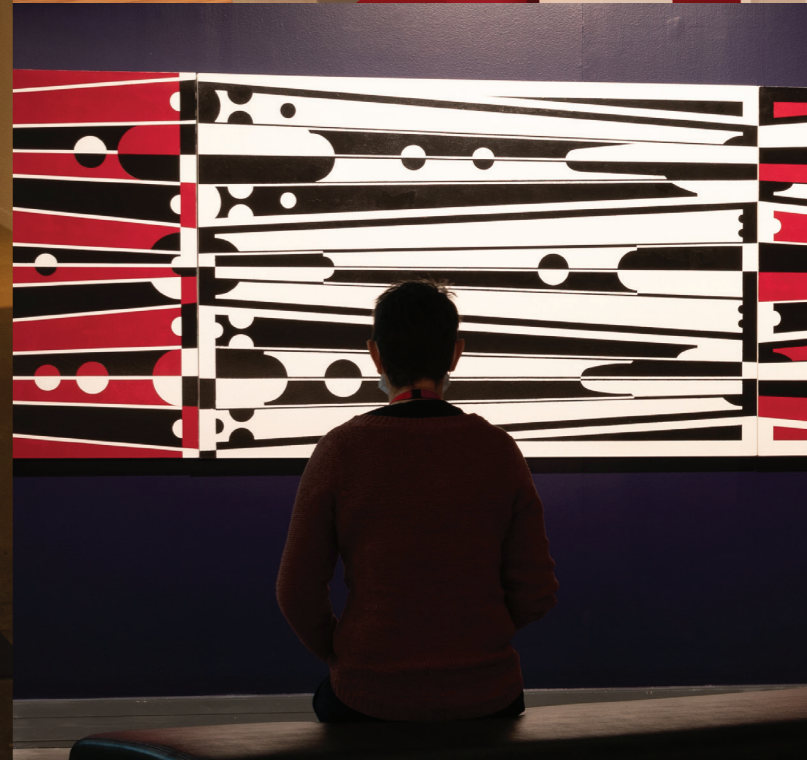
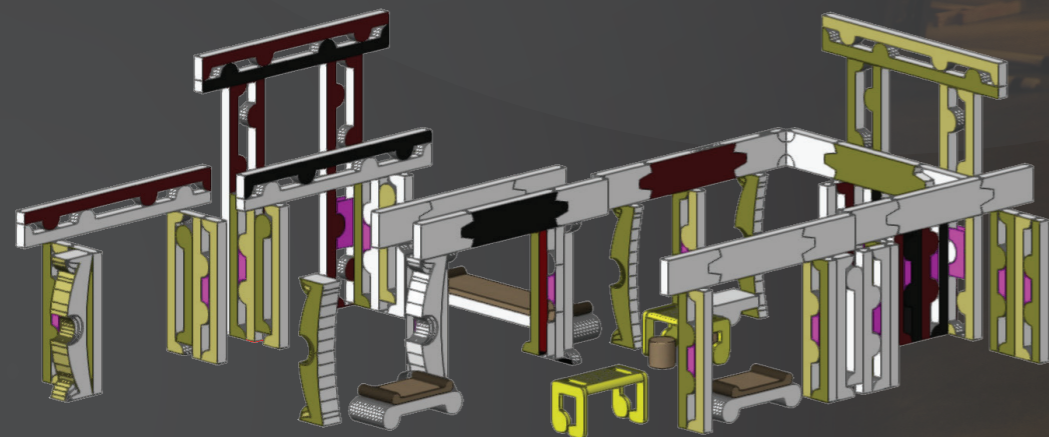
A custodian of Māori visual language, WharehokaSmith works to make this language a more visible and vital part of Aotearoa today. All his work reflects whakapapa, a deep connection to tīpuna, and an enduring commitment to celebrating and developing mātauranga (Māori knowledge).



# CONTENT

Customisable to suit different venue spaces

- 3D artworks: Multiple large structural forms and small sculptures
- 2D artworks: Wall-based works and free-standing canvases
- Curved digital mural (23m x 2.4m) with accompanying booklet
- 2 x interactive play tables (sculpture-based)
- Custom-designed furniture with accompanying booklet on symbols and concepts
- Audio of WharehokaSmith interviewed by Te Ingo Ngaia (Māori language teacher/writer), with taongo puoro
- Soundscape of wood carving and poi
- Labels for artworks, and bilingual poetic labels for large forms (audio of WharehokaSmith reciting them via QR code)
- Memorandum of Understanding between WharehokaSmith and Puke Ariki





*'This is a game-changing template for institutional relationships with Māori. Puke Ariki have invested in a touring option for the exhibition, and that means this conversation continues. Tukua!'*

Maree Mills (Ngāti Tūwharetoa), Curator Tangata Whenua, Waikato

## GAME-CHANGING AGREEMENT

A unique Memorandum of Understanding between WharehokaSmith and Puke Ariki laid the groundwork for *Nekenekehia Tukua*. Unlike typical artist contracts, the agreement was forged through a collaborative process rooted in te ao Māori and Te Tiriti o Waitangi – a partnership of equals, founded on respect.

The resulting exhibition was a co-creation between WharehokaSmith and Puke Ariki's team – a uniting of their distinct skills, experiences, and ideas.

# OPTIONS

## OPTION 1: FULL EXHIBITION

**SPACE:** Ceiling height 5 metres, floor space 350m<sup>2</sup>, wall space 65 running metres

**FEE:** \$7,500/month

**DURATION:** 4 months min

## OPTION 2: SMALLER THAN FULL EXHIBITION

The full exhibition is large in both its footprint and the required height. However, it is modular, and very flexible/scalable. Please send us a floor plan of your gallery and we can then establish appropriate content, fee, and duration.

## ADDITIONAL COSTS

- Freight
- Installation support
- Artist expenses for public programming, installation, and opening – to be organised directly with WharehokaSmith



# CONTACT US

Promote the potential of toi Māori to shape life in Aotearoa, well beyond gallery walls

Inspire and involve local Māori artists and communities in your region

Provide a welcoming space for important wānanga

Support a bold example of tino rangatiratanga through the waka of museums and galleries

**Peter Sarjeant**  
**Puke Ariki - Exhibition Delivery Specialist**  
**E: [peter.sarjeant@npdc.govt.nz](mailto:peter.sarjeant@npdc.govt.nz)**  
**P: (06) 759 6060**

**Puke Ariki**

 Te Kaunihera-ā-Rohe  
o Ngāmotu

WharehokaSmith